

# SPECTRA POWERTWIN Panel-PC Core-i Skylake Tripple Display Set-Up

Technical Notice

Version 1.0 – July 2018



# TRIPPLE DISPLAY SET-UP

## 1 How to set up triple display extended & clone mode function

Spectra PowerTwin Pix-6x00U(E)-Series with Windows® 10 IoT 64-bit

### 1.1 How to install resistive panel driver in Windows 10?

Install Windows 10 IoT 64-bit

View basic information about your computer

Windows edition

Windows 10 Enterprise 2016 LTSB  
© 2016 Microsoft Corporation. All rights reserved.

System

Processor: Intel(R) Core(TM) i5-6300U CPU @ 2.40GHz 2.50 GHz  
 Installed memory (RAM): 4.00 GB (3.88 GB usable)  
 System type: 64-bit Operating System, x64-based processor  
 Pen and Touch: No Pen or Touch Input is available for this Display

Computer name, domain, and workgroup settings

Computer name: DESKTOP-JBU45J9 [Change settings](#)  
 Full computer name: DESKTOP-JBU45J9  
 Computer description:  
 Workgroup: WORKGROUP

Windows activation

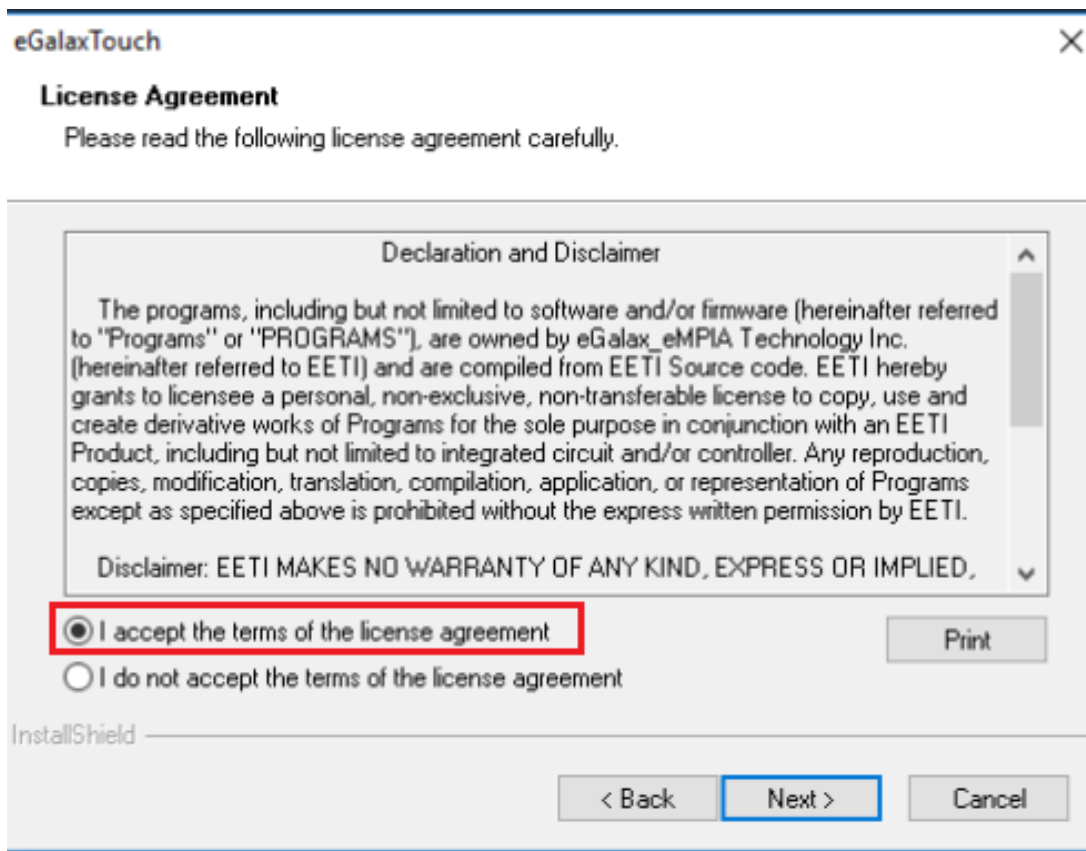
Connect to the Internet to activate Windows. [Read the Microsoft Software License Terms](#)  
 Product ID: 00380-70000-00001-AAOEM [Activate Windows](#)

Please double click Setup.exe (Driver CD)

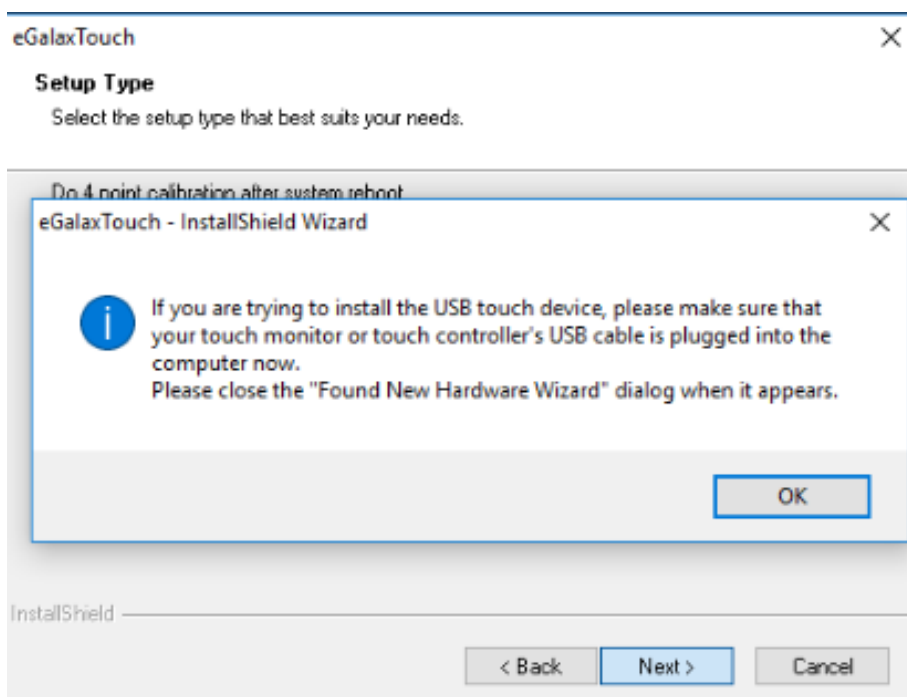
Resistive Touch Driver > Windows\_10 > eGalaxTouch\_5.14.0.14916-Release-160316-ForSingleTouchDevice

Name	Date modified	Type	Size
global	7/17/2017 2:15 AM	File folder	
x64	7/17/2017 2:15 AM	File folder	
x86	7/17/2017 2:15 AM	File folder	
_Setup.dll	5/17/2006 11:21 AM	Application extens...	161 KB
data1	3/17/2016 2:55 PM	Cabinet File	563 KB
data1.hdr	3/17/2016 2:55 PM	HDR File	13 KB
data2	3/17/2016 2:55 PM	Cabinet File	1 KB
Declaration	2/7/2012 5:41 PM	Text Document	2 KB
ISSetup.dll	3/17/2016 2:55 PM	Application extens...	540 KB
layout.bin	3/17/2016 2:55 PM	BIN File	2 KB
<b>setup</b>	6/4/2016 6:00 PM	Application	445 KB
setup	7/7/2016 2:23 PM	Configuration sett...	1 KB
setup.inx	8/2015 5:15 PM	INX File	283 KB
setup.isn	4/9/2007 4:17 PM	ISN File	284 KB
setup.iss	10/16/2014 6:49 PM	ISS File	2 KB
setup	12/2/2008 6:36 PM	Text Document	1 KB
TouchKit.xpo	10/6/2008 3:13 PM	XPO File	272 KB

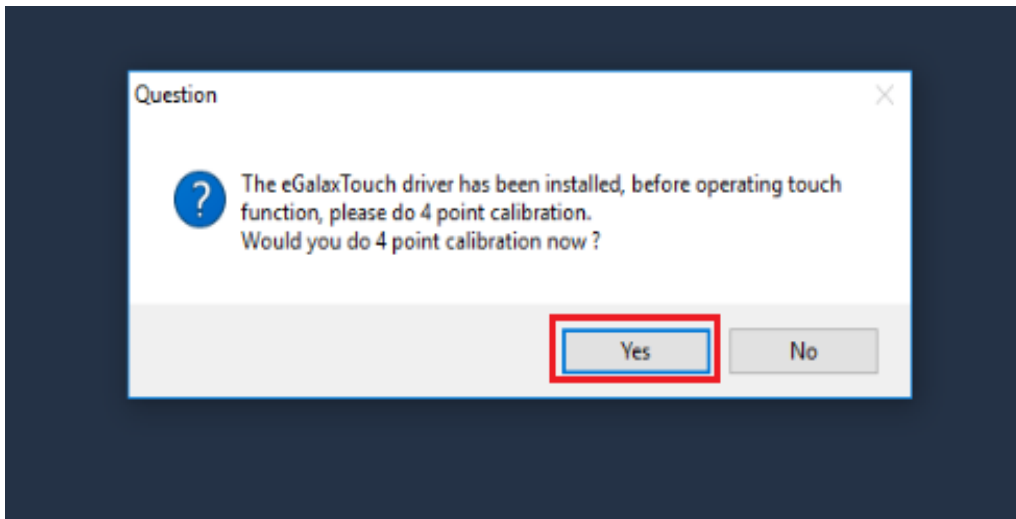
## Accept the terms of license agreement



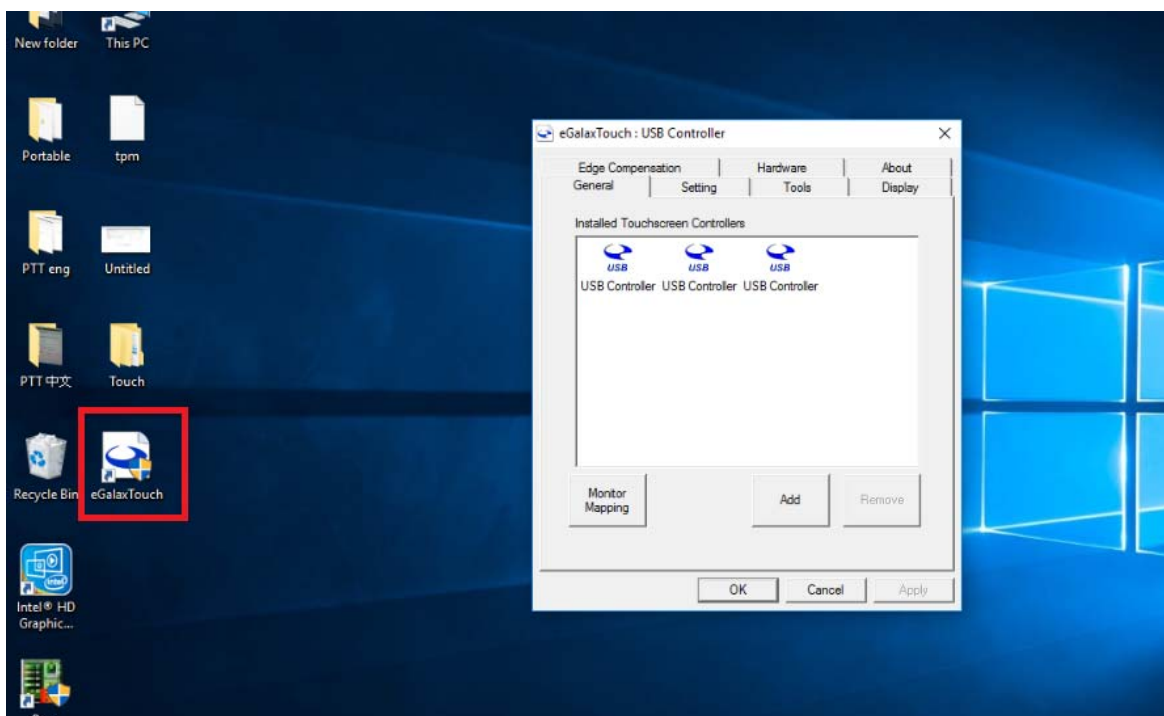
Please make sure that your touch monitor or touch controller's USB cable is plugged into the computer now



Please Select "Yes



The driver is installed completely

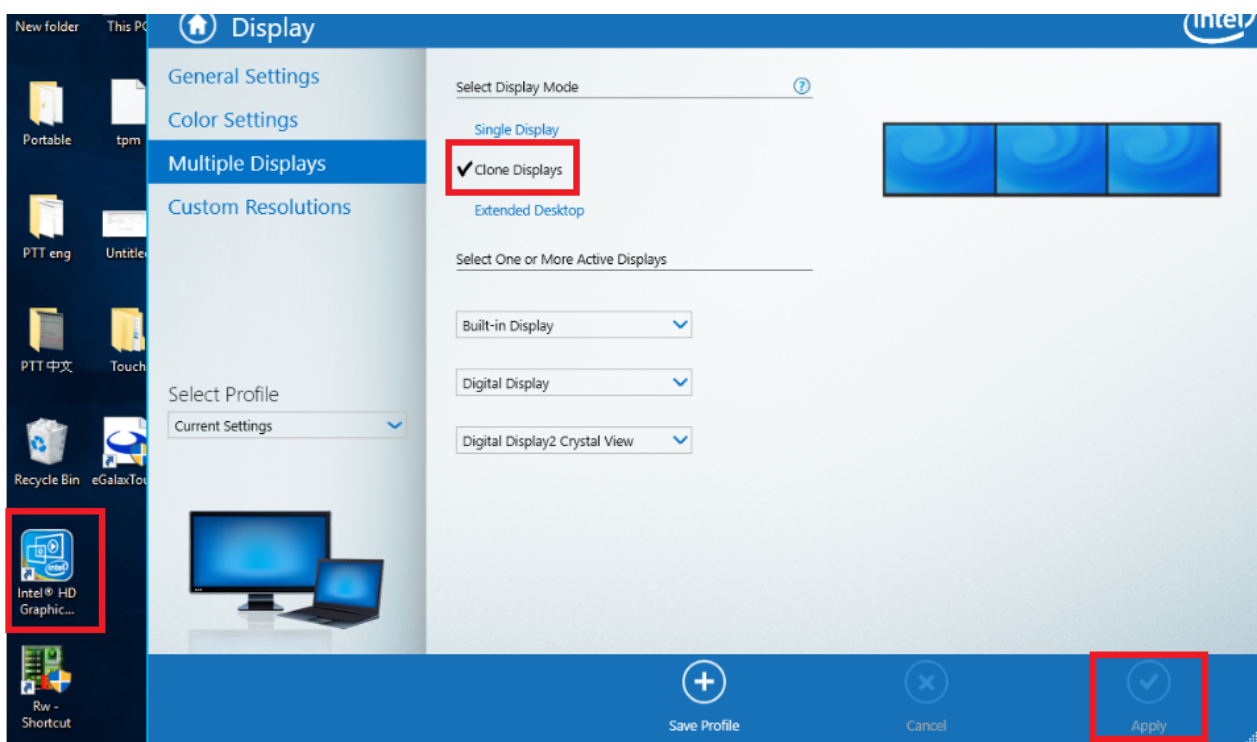


## 1.2 How to setup triple display extended and clone mode function on resistive panel?

Install Windows 10 IoT 64-bit

### 1.2.1 CLONE DISPLAYS

- Please double click Intel HD graphics, control panel
- Multiple Displays → Clone Displays
- Apply

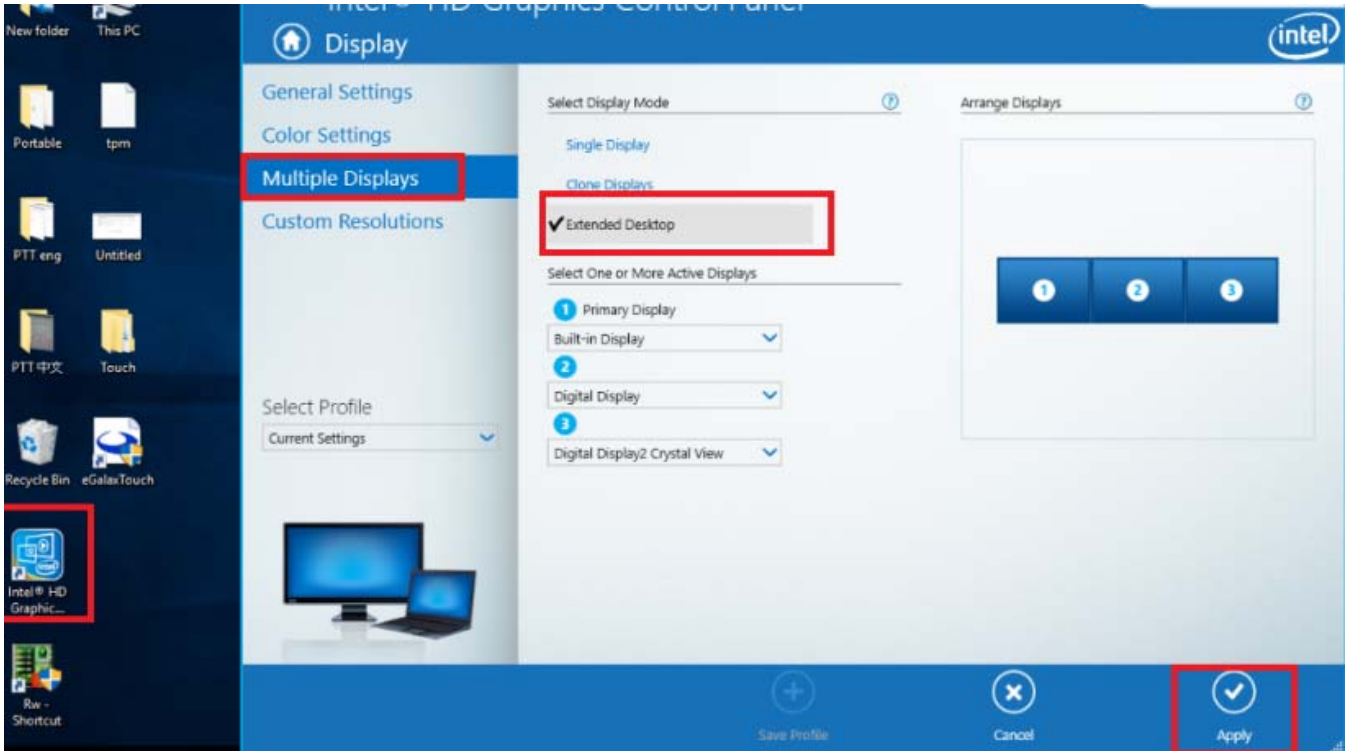


Spectra PowerTwin 10", 12" & 15"



## 1.2.2 EXTENDED DISPLAYS

- a. Please double click Intel HD graphics, control panel
- b. Multiple Displays → Extended Displays
- c. Apply



Spectra PowerTwin 10", 12" & 15"



## 1.3 How to setup triple display extended and clone function on capacitive panel?

### 1.3.1 CLONE DISPLAYS

Setup the same as in 1.2.1.



### 1.3.2 EXTENDED DISPLAYS

Setup the same as in 1.2.2.



## 1.4 How to use touch function in extended and clone mode?

Use touch function in extended displays



Use touch function in clone displays





Powered by individuality



**Spectra GmbH & Co. KG**

Mahdenstr. 3  
72768 Reutlingen  
Germany

Phone +49 (0) 7121 1432-10  
E-Mail [info@spectra.de](mailto:info@spectra.de)  
Web [www.spectra.de](http://www.spectra.de)



**Spectra GmbH & Co. KG**

Gewerbepark Ost 1  
4621 Sipbachzell (Wels)  
Austria

Phone +43 (0) 7240 20190  
E-Mail [info@spectra-austria.at](mailto:info@spectra-austria.at)  
Web [www.spectra-austria.at](http://www.spectra-austria.at)



**Spectra (Schweiz) AG**

Flugplatzstr. 5  
8404 Winterthur  
Switzerland

Phone +41 (0) 43 2771050  
E-Mail [info@spectra.ch](mailto:info@spectra.ch)  
Web [www.spectra.ch](http://www.spectra.ch)

**Sales Industrial PC Systems**

Phone +49 (0) 7121 1432-165  
E-Mail [vertrieb@spectra.de](mailto:vertrieb@spectra.de) / [sales@spectra.de](mailto:sales@spectra.de)



All other logos appearing in this catalog are the intellectual property of the respective company, product, or organization associated with the logo. All product specifications and information are subject to change without notice.

© spectra 2019