

# ADP-PSE

---

## PoE+ Module

### User's Manual

Edition 1.0

2017/1/18



---

## Copyright

Copyright 2017, all rights reserved. This document is copyrighted and all rights are reserved. The information in this document is subject to change without prior notice to make improvements to the products.

This document contains proprietary information and protected by copyright. No part of this document may be reproduced, copied, or translated in any form or any means without prior written permission of the manufacturer.

All trademarks and/or registered trademarks contains in this document are property of their respective owners.

## Disclaimer

The company shall not be liable for any incidental or consequential damages resulting from the performance or use of this product.

The company does not issue a warranty of any kind, express or implied, including without limitation implied warranties of merchantability or fitness for a particular purpose.

The company has the right to revise the manual or include changes in the specifications of the product described within it at any time without notice and without obligation to notify any person of such revision or changes.

## Trademark

All trademarks are the property of their respective holders.

---

Any questions please visit our website at <http://www.commell.com.tw/>

## Packing List:

Please check the package content before you starting using the adapter.



1 x ADP-PSE Module  
(BADPPSE\_A/4120033011)

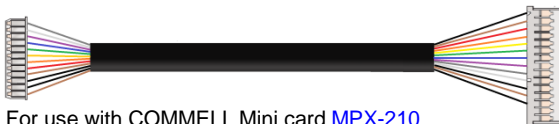


1 x DC Output Power Cable  
(OALDC-DC3/1040614)



For use with COMMELL Mini card [MPX-350](#)

1 x CN\_LAN Cable  
(OALPOE-02/1040628) **Optional**



For use with COMMELL Mini card [MPX-210](#)

1 x CN\_LAN Cable  
(OALPOE-03/1040629) **Optional**

## 1. < Product Specification >

### Product Description

**Interface**

RJ45 for connecting to PD

Internal 12-pin head for connecting with powered board

Internal 2-pin terminal block for DC power of powered board

**Accessories**

DC Output Power Cable (OEM necessary if use with different device)

Cable (connect MPX-350 to Mini card)(OALPD02/1040628)Optional

Cable (connect MPX-210 to Mini card)(OALPD03/1040629)Optional

**Dimensions (L x W )**

70.00mm x 49.52mm

### Operating Conditions

**Power Input**

DC 9~30V

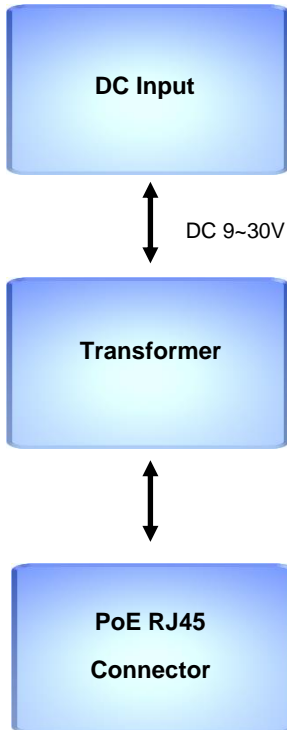
**Temperature**

-40~+125°C

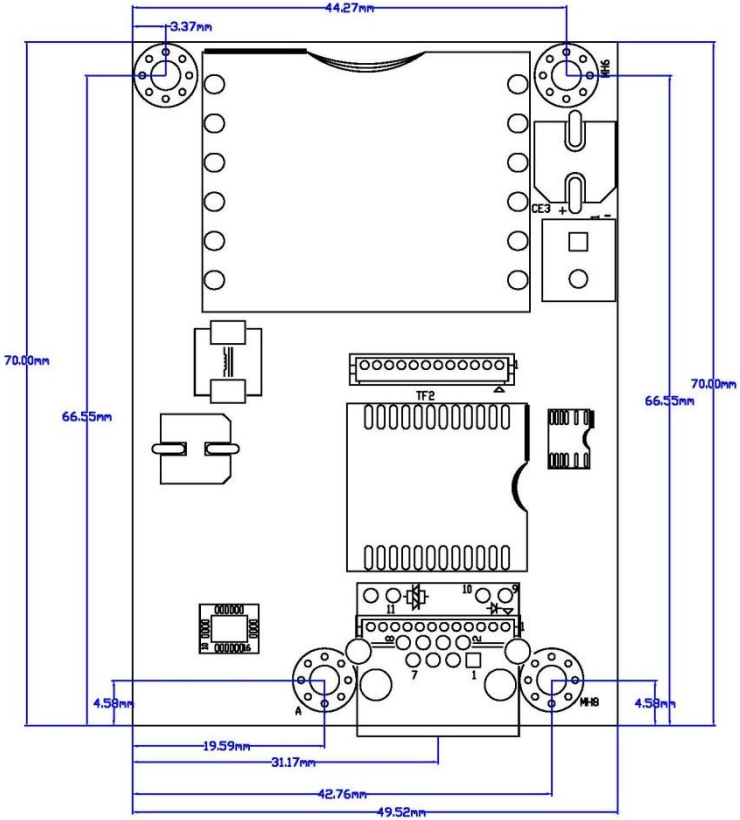
### General Specifications

**Compliance**

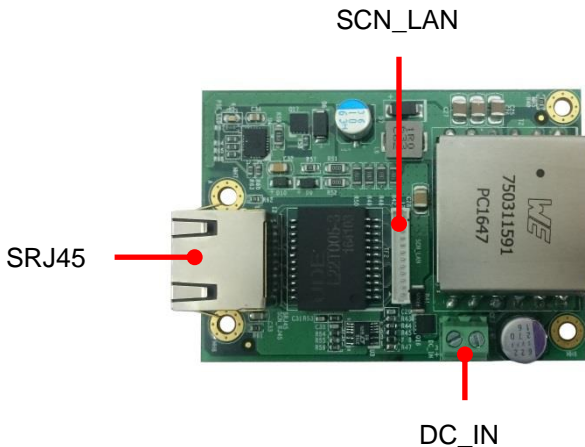
IEEE802.3at/af

**2. < Block Diagram >**

### 3. < Mechanical Drawing >



## 4. < Connector Location and Reference >



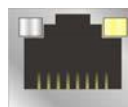
Connector	Function
SCN_LAN	12-pin Ethernet Connector
SRJ45	RJ-45 LAN Port
DC_IN	2-pin power input with Terminal Block

### LAN Connector : SRJ45

Connector Type:

16-pin (8 x 2) 2.0 x 2.0 mm header

RJ45 10/100/1000Mbps connector



8 1

Pin	Description	Pin	Description
1	MI0+	2	MI0-
3	MI1+	4	MI2+
5	MI2-	6	MI1-
7	MI3+	8	MI3-
9	LINKLED	10	ACTLED
11	LINK100	12	LINK1000
13	GND	14	GND

**Connector : SCN\_LAN**

**Connector Type:**

12-pin (12 x 1) , pitch : 1.25 mm ,DIP type



**Straight P.C.B Connector**

Pin	Description	Pin	Description
1	SACTLED	2	SLINK0
3	SMDI0+	4	SMDI0-
5	SMDI1+	6	SMDI1-
7	SMDI2+	8	SMDI2-
9	SMDI3+	10	SMDI3-
11	SLINK1H	12	SLINK1G

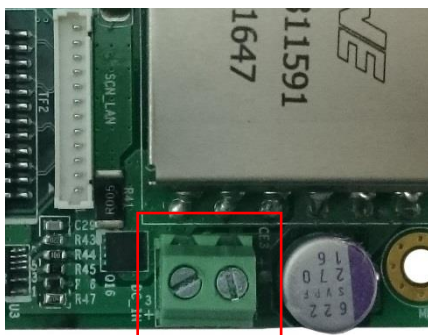
**Connector : DC\_IN**

**Connector Type:**

2-pin (2 x 1) , pitch : 3.81 mm

**Straight P.C.B Connector**

Pin	Description	Pin	Description
1	GND	2	Power input (9~30V)

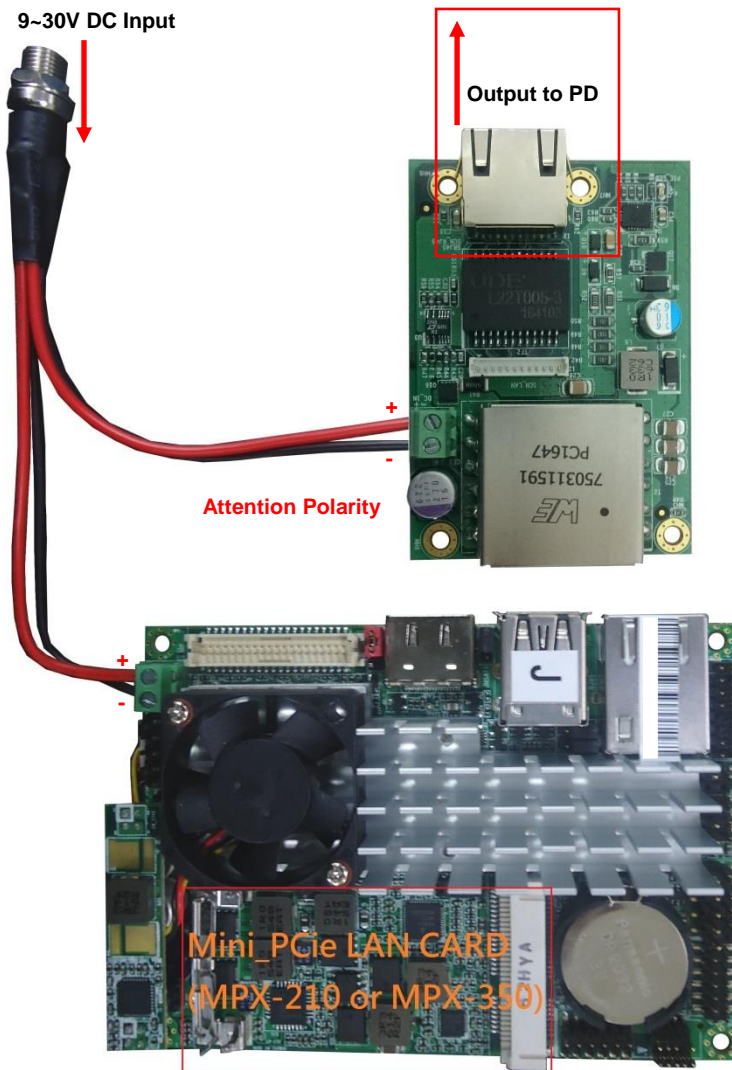




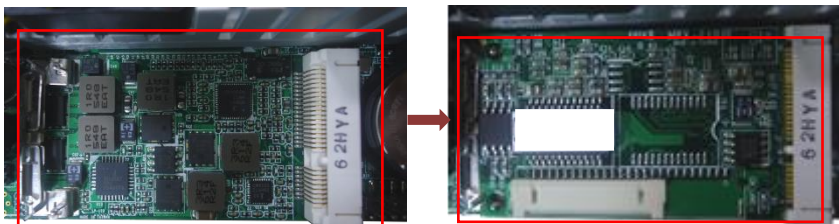
## 5. < ADP-PSE Installation Guide >

Following implement to use ADP-PSE with “COMMELL's M/B + Mini\_PcIe LAN card” for complies POE Power Sourcing Equipment.

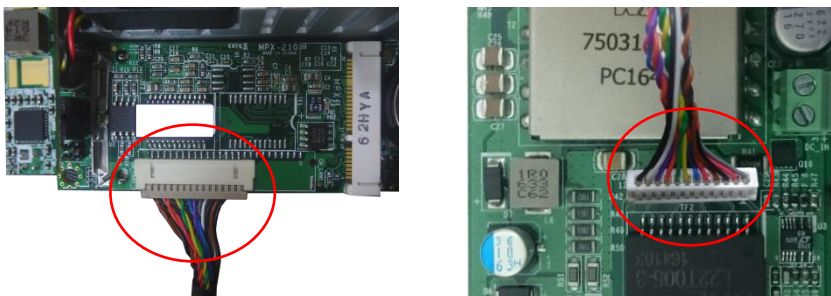
1. DC cable connection between ADP-PSE and Motherboard (DC Input for 9~30V) , SRJ45 for connection with PD).



2. Insert COMMELL Mini\_PcIe LAN Card(MPX-210) on Motherboard.



3. Plug PoE cable(OALPOE-03) to MPX-210 and ADP-PSE



4. Connect SRJ45 connector on ADP-PSE via LAN cable , then ready for PD connection



## Contact information

Any advice or comment about our products and service, or anything we can help you please don't hesitate to contact with us. We will do our best to support you for your products, projects and business.

### Taiwan Commate computer Inc.

<b>Address</b>	19F., NO.94, Sec. 1, Xintai 5 <sup>th</sup> Rd., Xizhi Dist., New Taipei City 22102, Taiwan.
<b>TEL</b>	+886-2-26963909
<b>FAX</b>	+886-2-26963911
<b>Website</b>	<a href="http://www.commell.com.tw">www.commell.com.tw</a>
<b>E-mail</b>	<a href="mailto:info@commell.com.tw">info@commell.com.tw</a> (General information) <a href="mailto:tech@commell.com.tw">tech@commell.com.tw</a> (Technical Support)

**Commell is a brand name of Taiwan Commate computer Inc.**