

# ADP-PD

---

## PoE+ Module

### User's Manual

Edition 1.0

2017/1/18



---

## Copyright

Copyright 2017, all rights reserved. This document is copyrighted and all rights are reserved. The information in this document is subject to change without prior notice to make improvements to the products.

This document contains proprietary information and protected by copyright. No part of this document may be reproduced, copied, or translated in any form or any means without prior written permission of the manufacturer.

All trademarks and/or registered trademarks contains in this document are property of their respective owners.

## Disclaimer

The company shall not be liable for any incidental or consequential damages resulting from the performance or use of this product.

The company does not issue a warranty of any kind, express or implied, including without limitation implied warranties of merchantability or fitness for a particular purpose.

The company has the right to revise the manual or include changes in the specifications of the product described within it at any time without notice and without obligation to notify any person of such revision or changes.

## Trademark

All trademarks are the property of their respective holders.

---

Any questions please visit our website at <http://www.commell.com.tw/>

## Packing List:

Please check the package content before you starting using the adapter.



1 x ADP-PD-5V or ADP-PD-12V  
BADPPD-5V\_A(4120032011) /  
BADPPD-12V\_A(4120032021)



1 x DC Output Power Cable  
(OALDC-DC3/1040614)



For use with COMMELL motherboard [LP-176](#)

1 x CN\_LAN Cable  
(OALPOE-01/1040627) **Optional**



For use with COMMELL Mini card [MPX-350](#)

1 x CN\_LAN Cable  
(OALPOE-02/1040628) **Optional**



For use with COMMELL Mini card [MPX-210](#)

1 x CN\_LAN Cable  
(OALPOE-03/1040629) **Optional**

# 1. < Product Specification

## Product Description

<b>Interface</b>	RJ45 for connecting with PSE
	Internal 12-pin head for connecting with powered board
	Internal 2-pin terminal block for DC power of powered board
<b>Accessories</b>	DC Output Power Cable
	Cable (connect LP-176 to Motherboard)(OALPOE-01/1040627)Optional
	Cable (connect MPX350 to Mini card)(OALPOE-02/1040628)Optional
	Cable (connect MPX210 to Mini card)(OALPOE-03/1040629)Optional
<b>Dimensions (L x W )</b>	70.00mm x 40.00mm

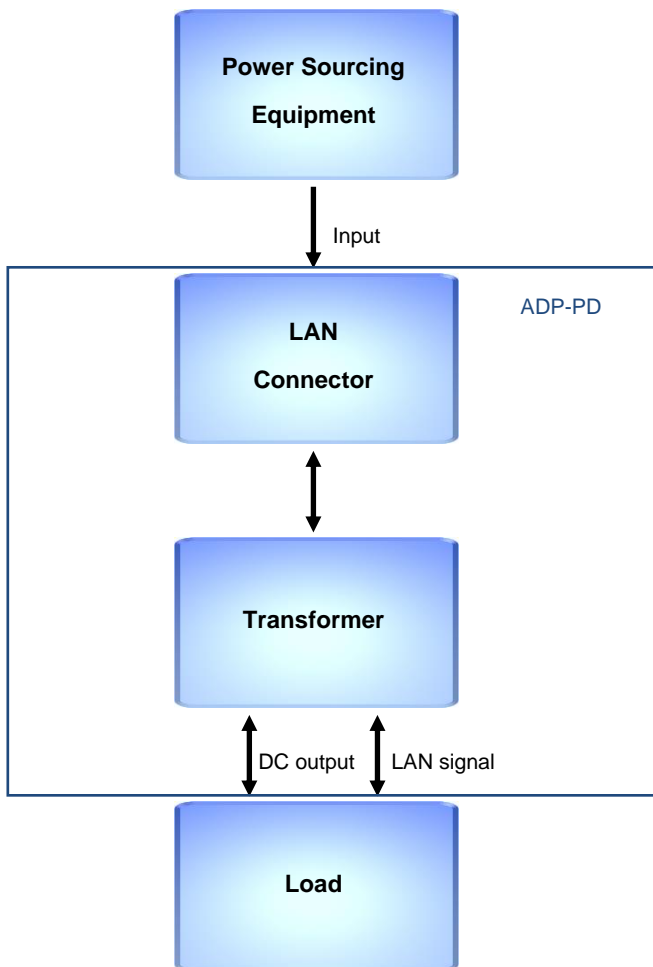
## Operating Conditions

<b>Power Requirement</b>	Port Voltage 37V to 57V from PSE
<b>Temperature</b>	-40~+125°C

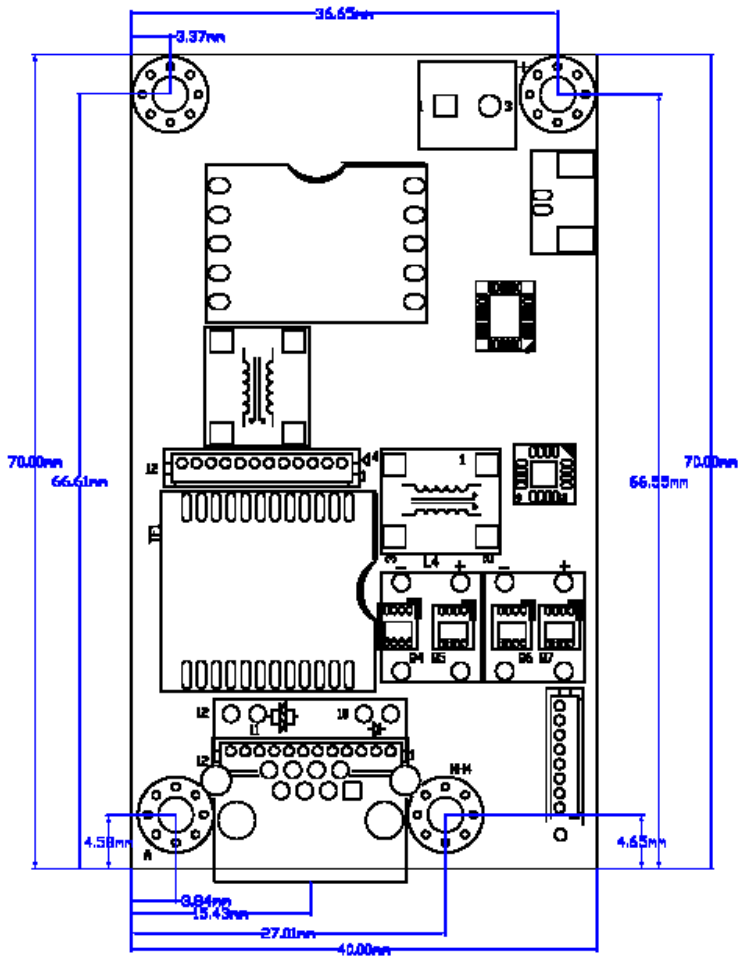
## General Specifications

<b>Compliance</b>	IEEE802.3at/af
<b>Ordering Code</b>	<b>ADP-PD-5V</b> : IEEE802.3at/af compliant with DC output 5V/4.7A
	<b>ADP-PD-12V</b> : IEEE802.3at/af compliant with DC output 12V/1.9A

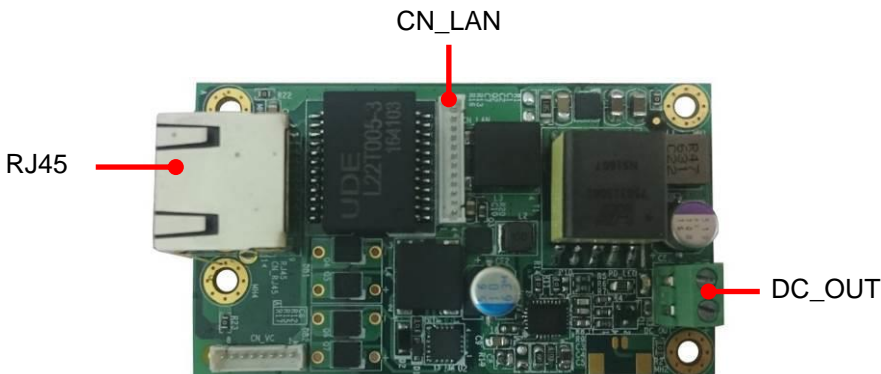
## 2. < Block Diagram >



### 3. < Mechanical Drawing >



## 4. < Connector Location and Reference >



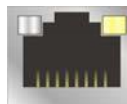
Connector	Function
CN_LAN	12-pin Ethernet Connector
RJ45	RJ-45 LAN Port
DC_OUT	2-pin power output with Terminal Block

### LAN Connector : RJ45

Connector Type:

16-pin (8 x 2) 2.0 x 2.0 mm header

RJ45 10/100/1000Mbps connector



8 1

Pin	Description	Pin	Description
1	MI0+	2	MI0-
3	MI1+	4	MI2+
5	MI2-	6	MI1-
7	MI3+	8	MI3-
9	LINKLED	10	ACTLED
11	LINK100	12	LINK1000
13	GND	14	GND

**Connector : CN\_LAN**

Connector Type:

12-pin (12 x 1) , pitch : 1.25 mm ,DIP type



12 1

Straight P.C.B Connector

Pin	Description	Pin	Description
1	ACTLED	2	LINK0
3	RTD0+	4	RTD0-
5	RTD1+	6	RTD1-
7	RTD2+	8	RTD2-
9	RTD3+	10	RTD3-
11	LINK1H	12	LINK1G

**Connector : DC\_OUT**

Connector Type:

2-pin (2 x 1) , pitch : 3.81 mm

Straight P.C.B Connector

Pin	Description	Pin	Description
1	GND	2	Power output

For ADP-PD-5V , PIN2 with **+5V/4.7A** Output

For ADP-PD-12V , PIN2 with **+12V/1.9A** Output

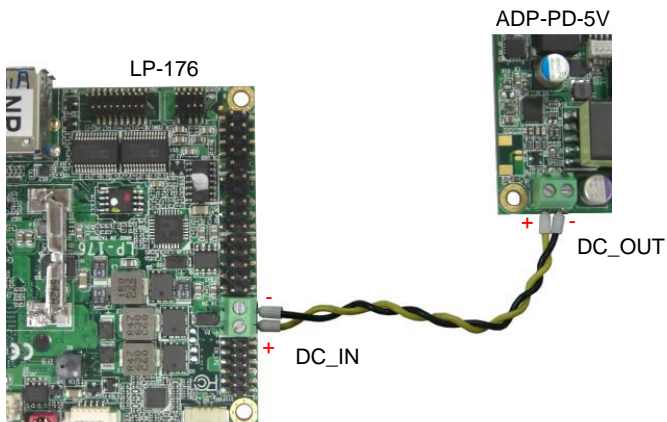




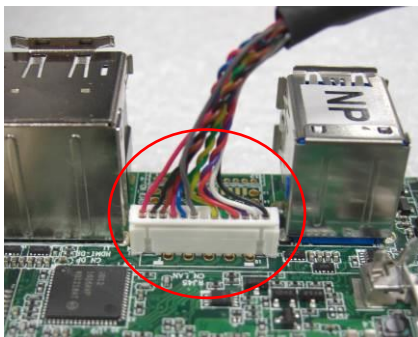
## 5. < ADP-PD Installation Guide >

Following implement to use ADP-PD with “COMMELL’s PICO M/B(LP-173 or LP-176) for complies as PoE Power Device.

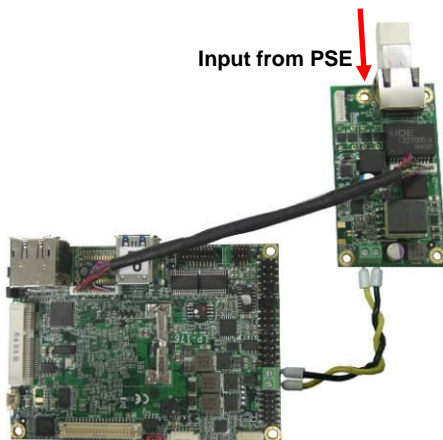
1. DC cable connection between ADP-PD and Motherboard  
(Connect ADP-PD-5V “CN\_OUT” to LP-176 “DC\_IN”) .



- 2-2. Plug PoE cable(OALPOE-01) to LP-176 and ADP-PD .

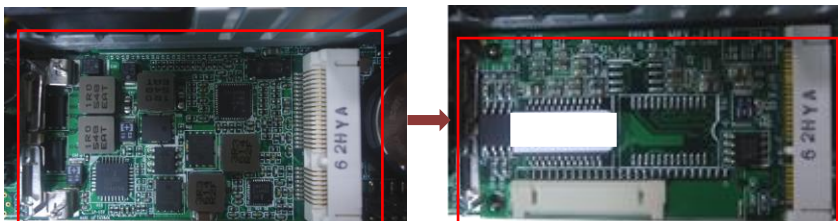


2-3. Connect RJ45 connector from PSE to ADP-PD via LAN cable .

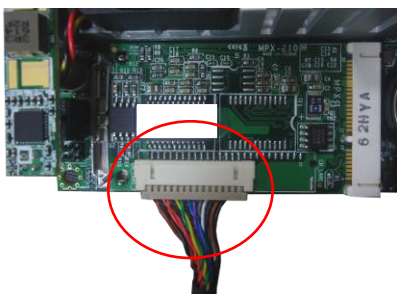


3. The procedures shows how assembly COMMELL's Mini\_PcCle LAN Card([MPX-350](#) 、 [MPX-210](#)) on “COMMELL's PICO M/B(LP-173 or LP-176)

3-1. Insert COMMELL Mini\_PcCle LAN Card(MPX-210) on Motherboard.



3-2. Plug PoE cable(OALPOE-03) to MPX-210 and ADP-PD , refer step 1 for DC connection , then ready for use .



## Contact information

Any advice or comment about our products and service, or anything we can help you please don't hesitate to contact with us. We will do our best to support you for your products, projects and business.

### Taiwan Commate computer Inc.

<b>Address</b>	19F., NO.94, Sec. 1, Xintai 5 <sup>th</sup> Rd., Xizhi Dist., New Taipei City 22102, Taiwan.
<b>TEL</b>	+886-2-26963909
<b>FAX</b>	+886-2-26963911
<b>Website</b>	<a href="http://www.commell.com.tw">www.commell.com.tw</a>
<b>E-mail</b>	<a href="mailto:info@commell.com.tw">info@commell.com.tw</a> (General information) <a href="mailto:tech@commell.com.tw">tech@commell.com.tw</a> (Technical Support)

**Commell is a brand name of Taiwan Commate computer Inc.**